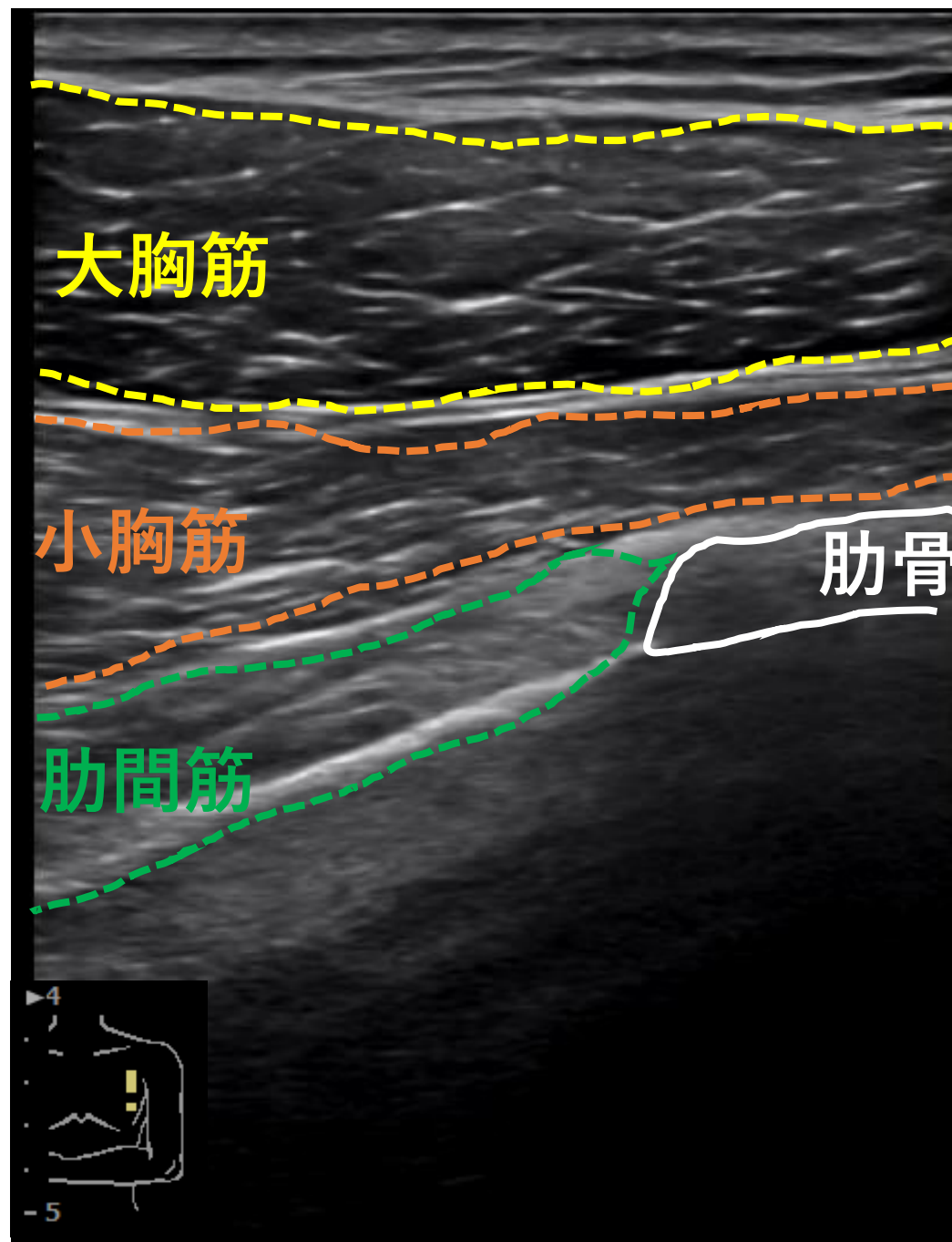
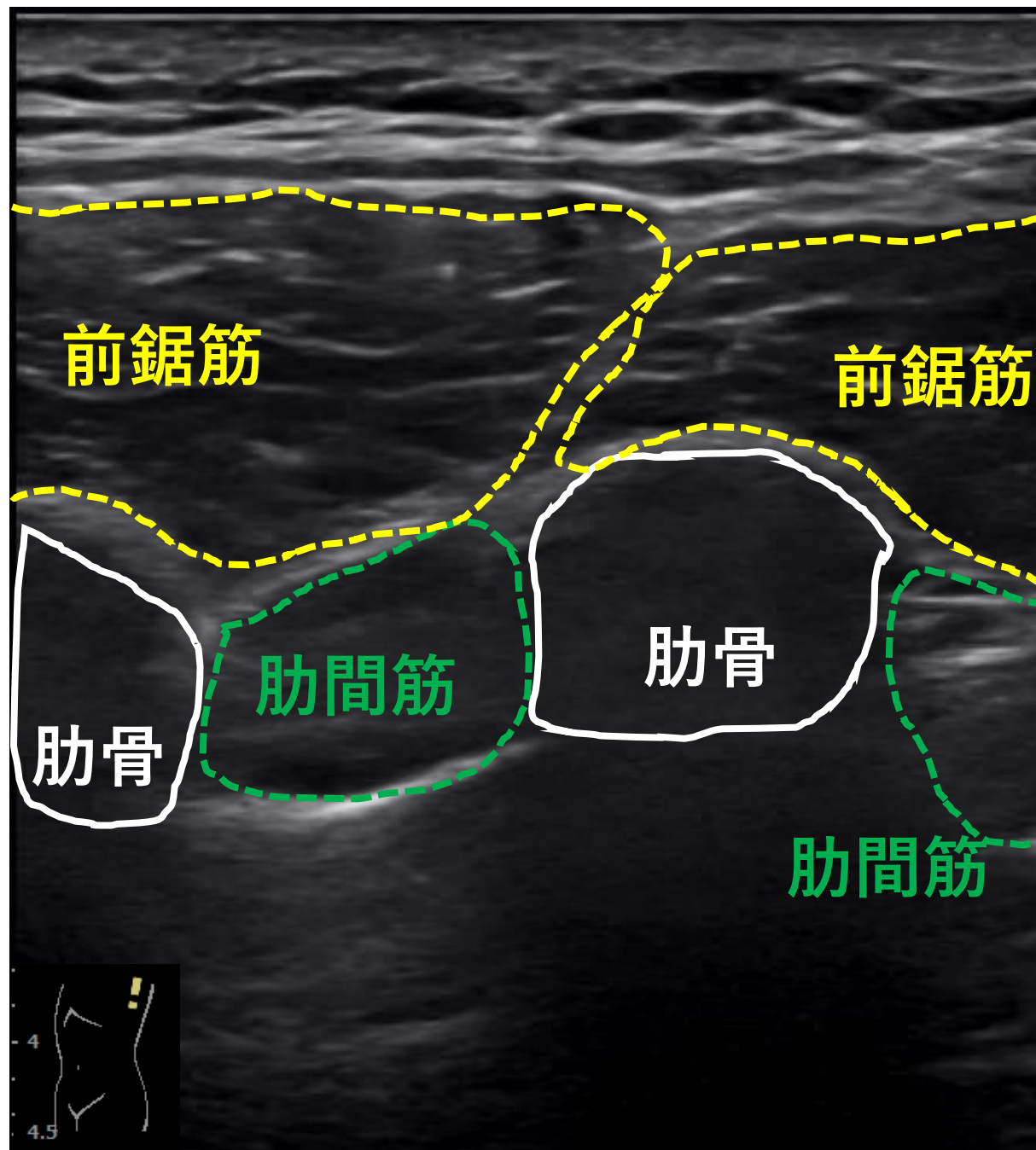


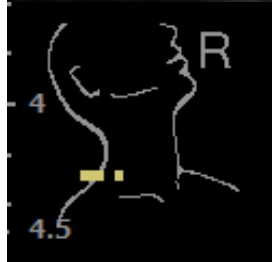
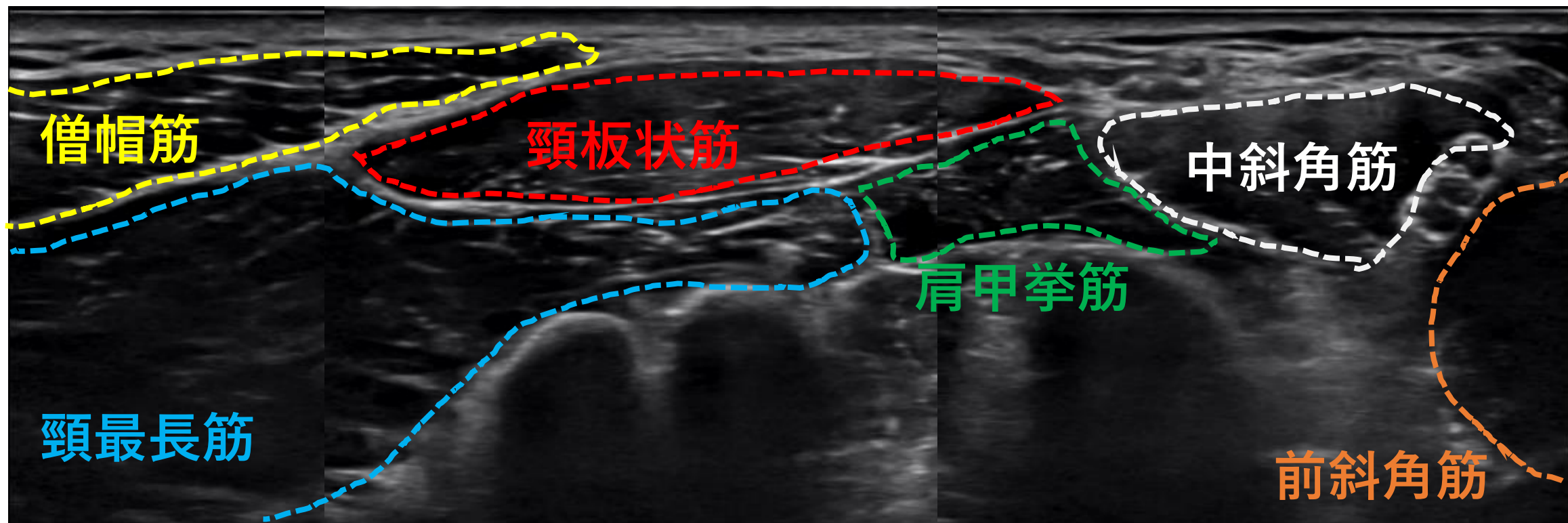
大胸筋・小胸筋



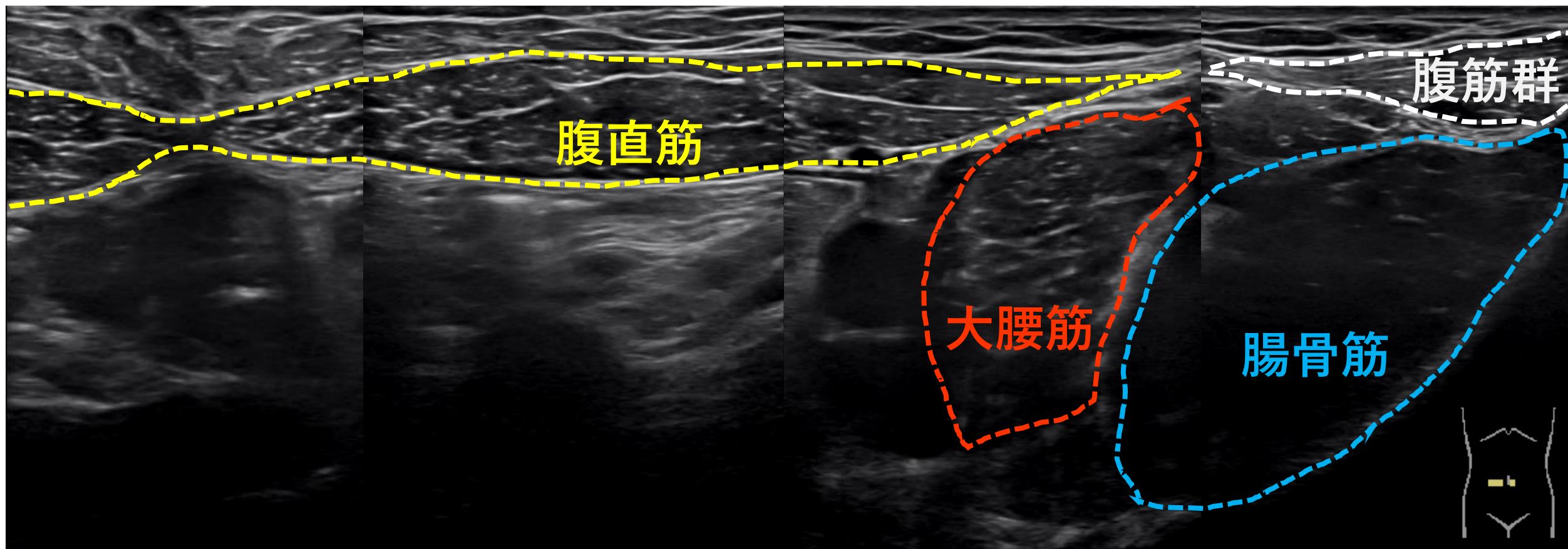
前鋸筋・肋間筋



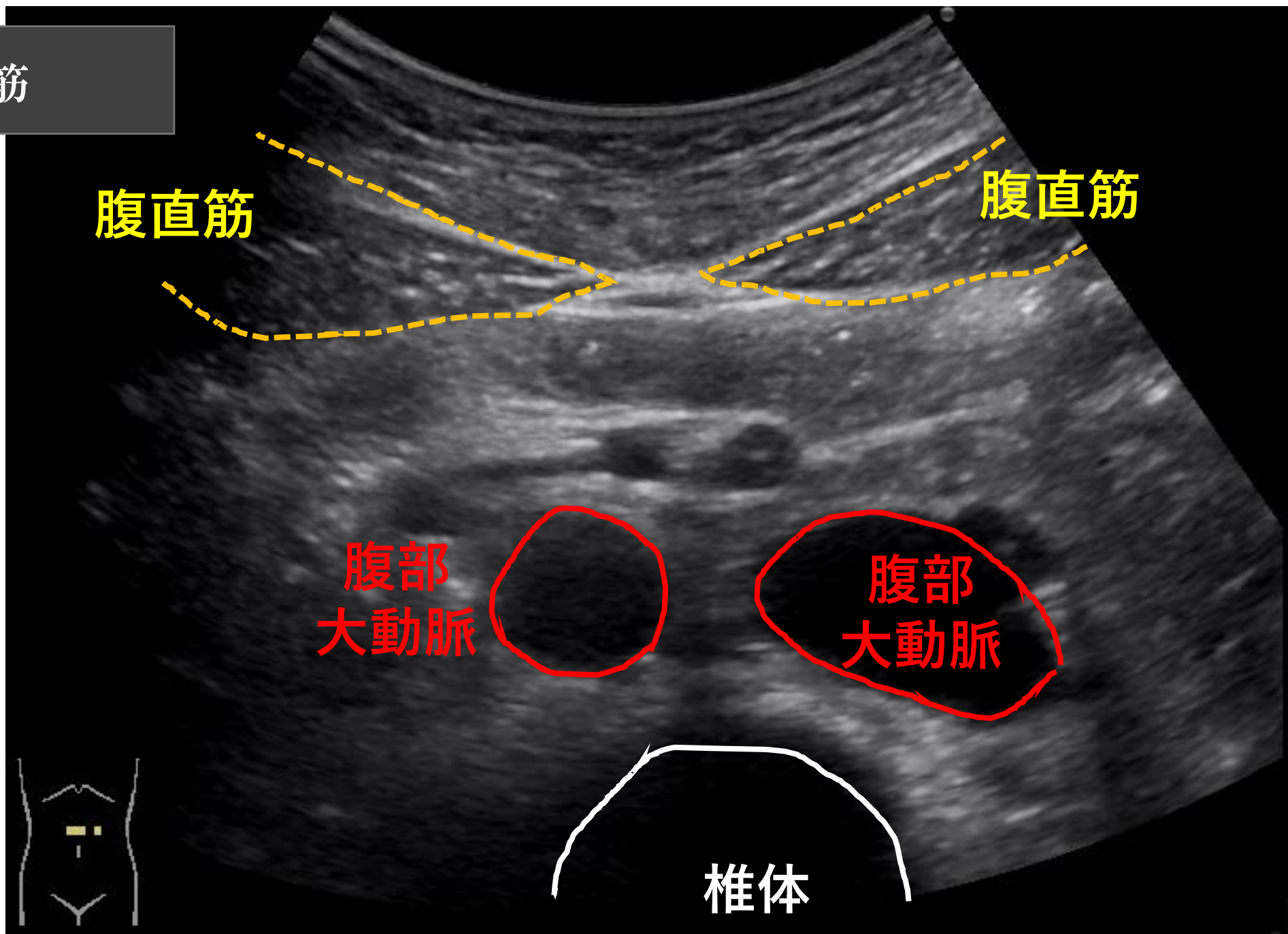
僧帽筋・中斜角筋・前斜角筋



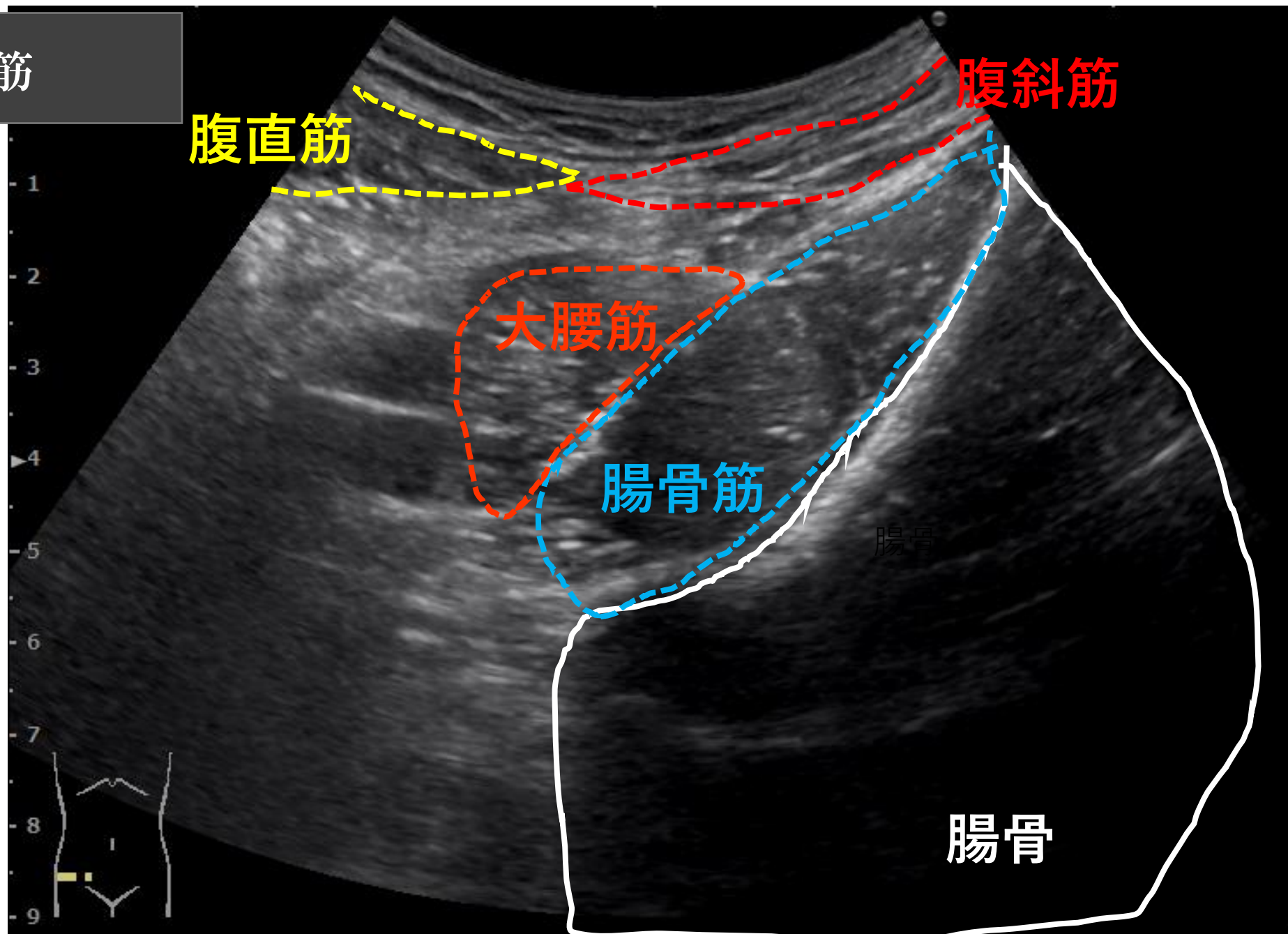
腹直筋



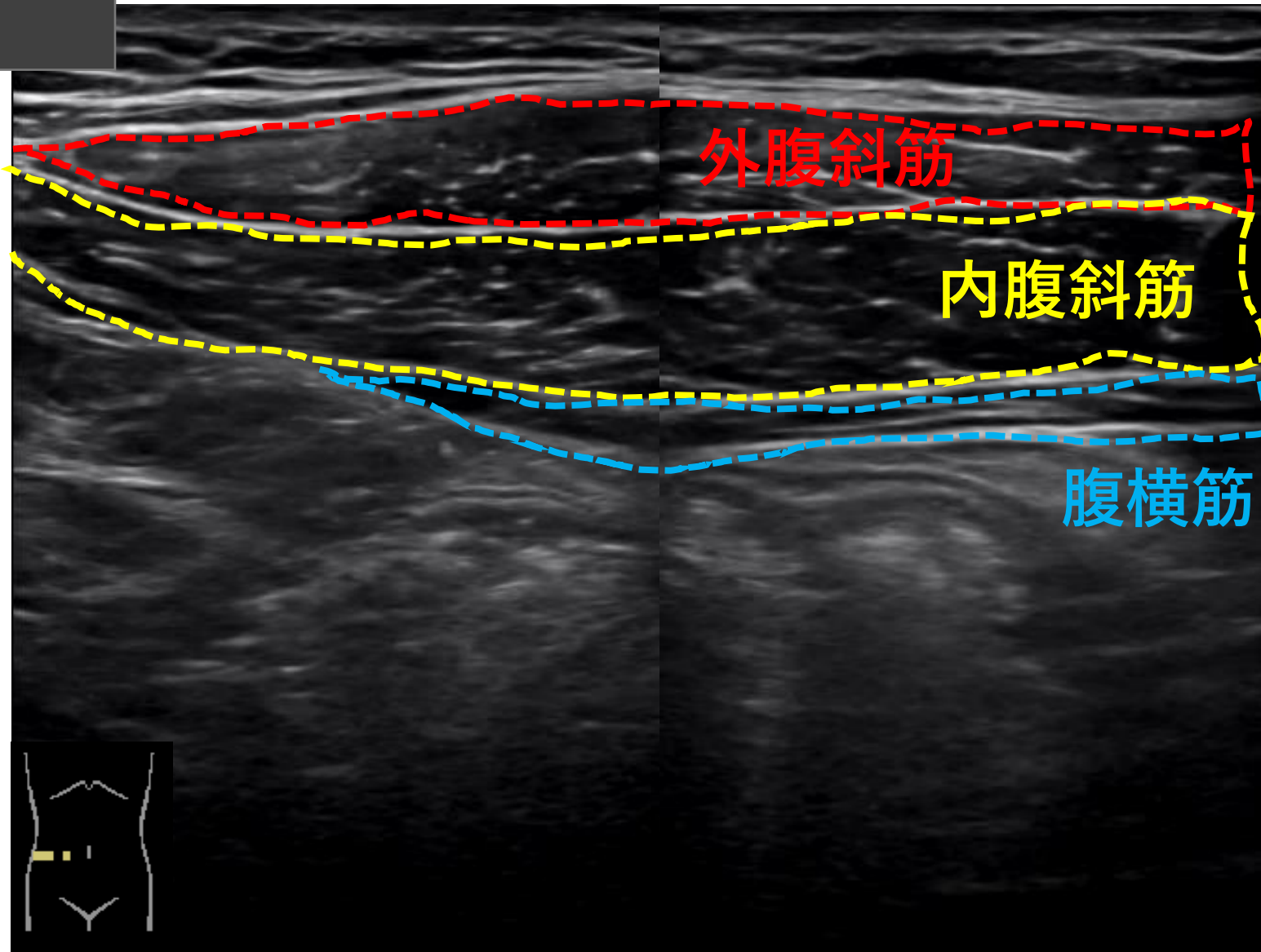
腹直筋



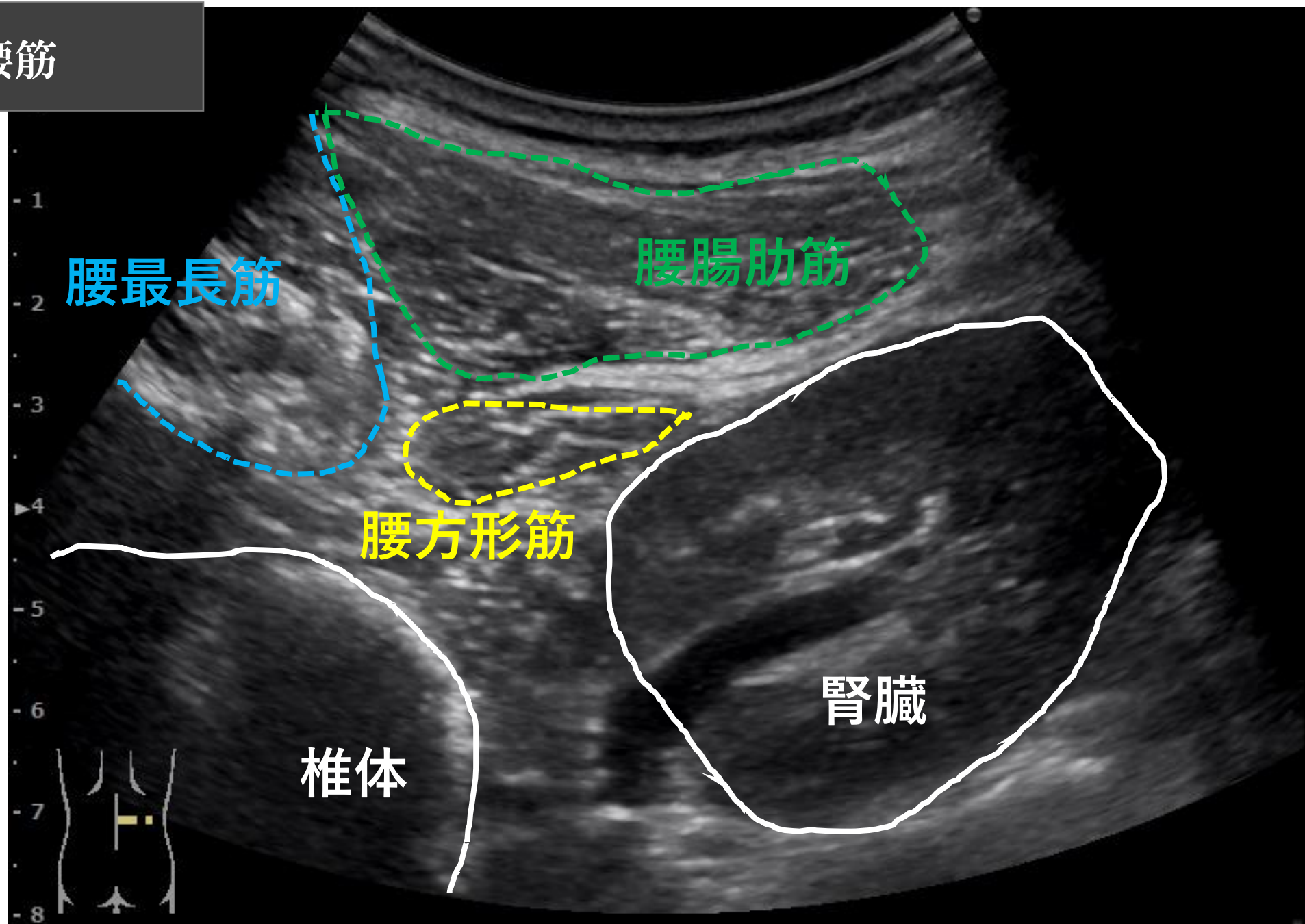
腹直筋



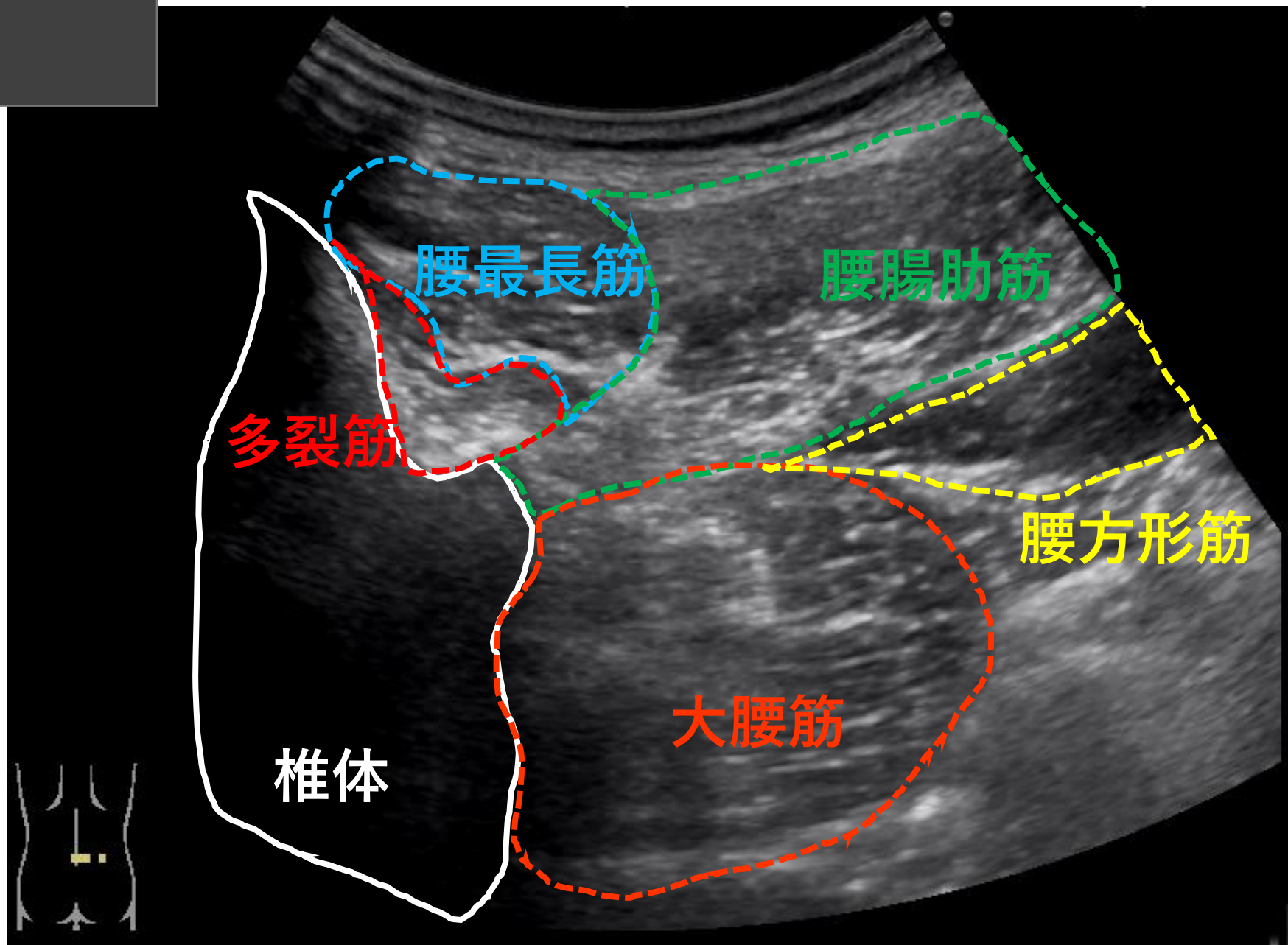
腹斜筋



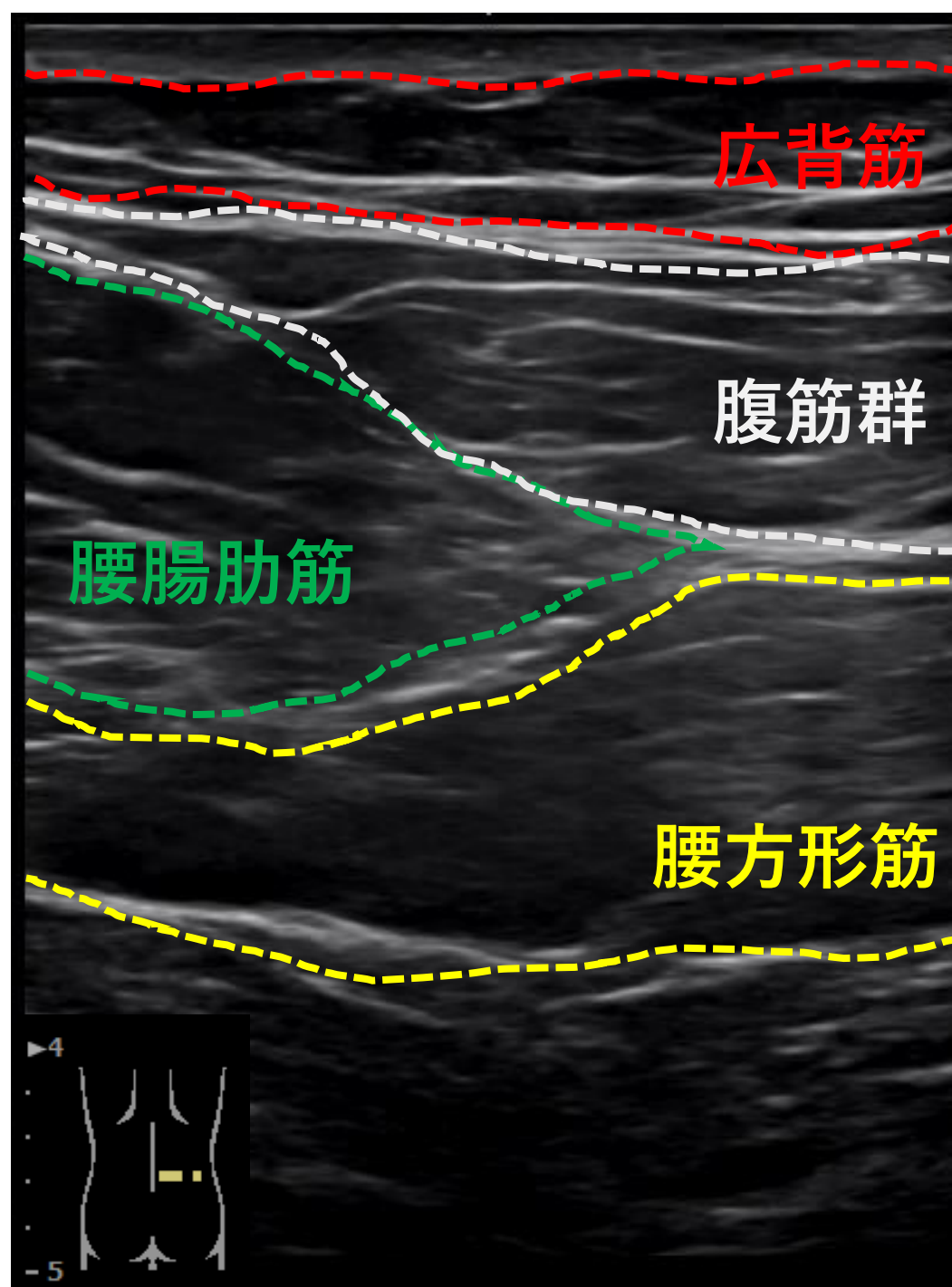
腸腰筋



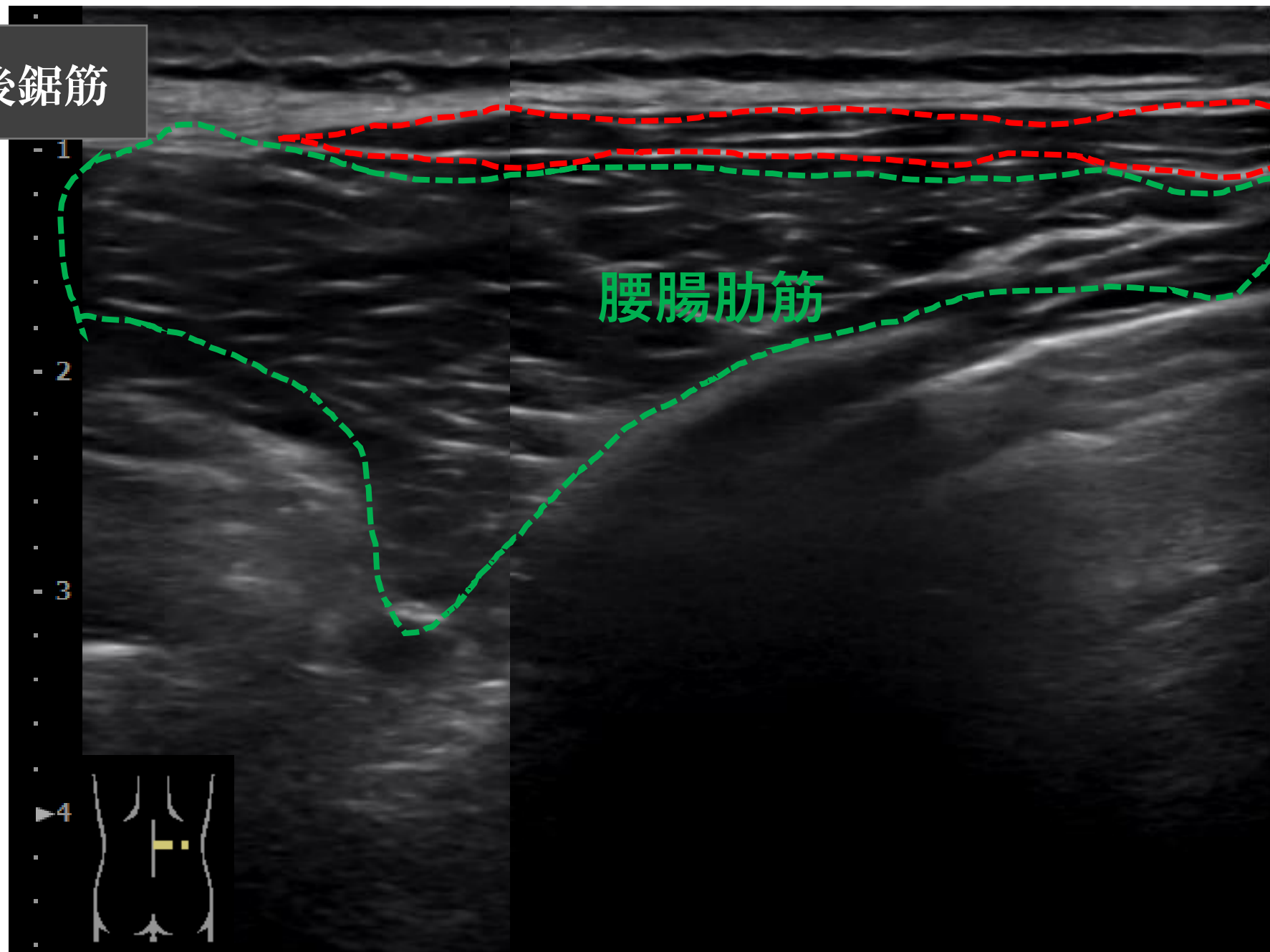
腸腰筋



腸腰筋



腸腰筋・下後鋸筋



下後鋸筋

腰腸肋筋

脊柱起立筋群

